

Model: ZR310KCE-TWD

Data

Type: Hermetic scroll compressors

Producer: Copeland

Series: ZR

Model: ZR310KCE-TWD

Technical data

Displacement [m ³ /h]:	71,4
Sound power [dBA]:	85
Sound pressure level [dB]:	74
Net Weight [kg]:	160
Gross Weight [kg]:	188
Oil charge [dm ³]:	6,8
Maximum high pressure [bar]:	32
Maximum standstill pressure [bar]:	20
Minimal lowside temperature [°C]:	-35
Maximum lowside temperature [°C]:	52
PED category:	2

Electrical data

Power supply [V/~/Hz]:	380-420/3/50Hz
Locked rotor current [A]:	272
Max. operating current [A]:	52,0
Winding resistance [Ω]:	0,5

Connections

	<u>inches</u>
Suction Rotolock valve connection:	2 1/4" x 12 UN
Discharge Rotolock valve connection:	1 3/4" x 12 UN
Suction connection with supplied sleeve:	1 5/8"
Discharge connection with supplied sleeve:	1 3/8"

Model: ZR310KCE-TWD

Capacity

R134a

Cooling capacity [kW]

$t_c \setminus t_e$	-15	-10	-5	0	5	10	15
30	23.16	29.10	36.16	44.49	54.24	65.56	78.60
35	21.83	27.55	34.33	42.33	51.71	62.60	75.18
40	20.50	25.97	32.47	40.14	49.13	59.59	71.68
45	19.16	24.38	30.58	37.90	46.50	56.52	68.12
50	-	22.78	28.67	35.63	43.83	53.39	64.49
55	-	-	26.73	33.33	41.11	50.21	60.79
60	-	-	24.77	30.99	38.34	46.97	57.03
65	-	-	-	28.62	35.53	43.67	53.20
70	-	-	-	-	32.67	40.32	49.30

Power input [kW]

$t_c \setminus t_e$	-15	-10	-5	0	5	10	15
30	8.91	8.98	9.06	9.16	9.29	9.47	9.70
35	9.88	9.94	10.02	10.11	10.23	10.39	10.59
40	10.95	11.02	11.10	11.19	11.30	11.44	11.64
45	12.15	12.23	12.31	12.40	12.51	12.65	12.83
50	-	13.59	13.68	13.78	13.89	14.03	14.20
55	-	-	15.21	15.32	15.44	15.58	15.76
60	-	-	16.91	17.04	17.18	17.33	17.51
65	-	-	-	18.96	19.12	19.29	19.48
70	-	-	-	-	21.27	21.46	21.67

Model: ZR310KCE-TWD

Capacity

Current [A]

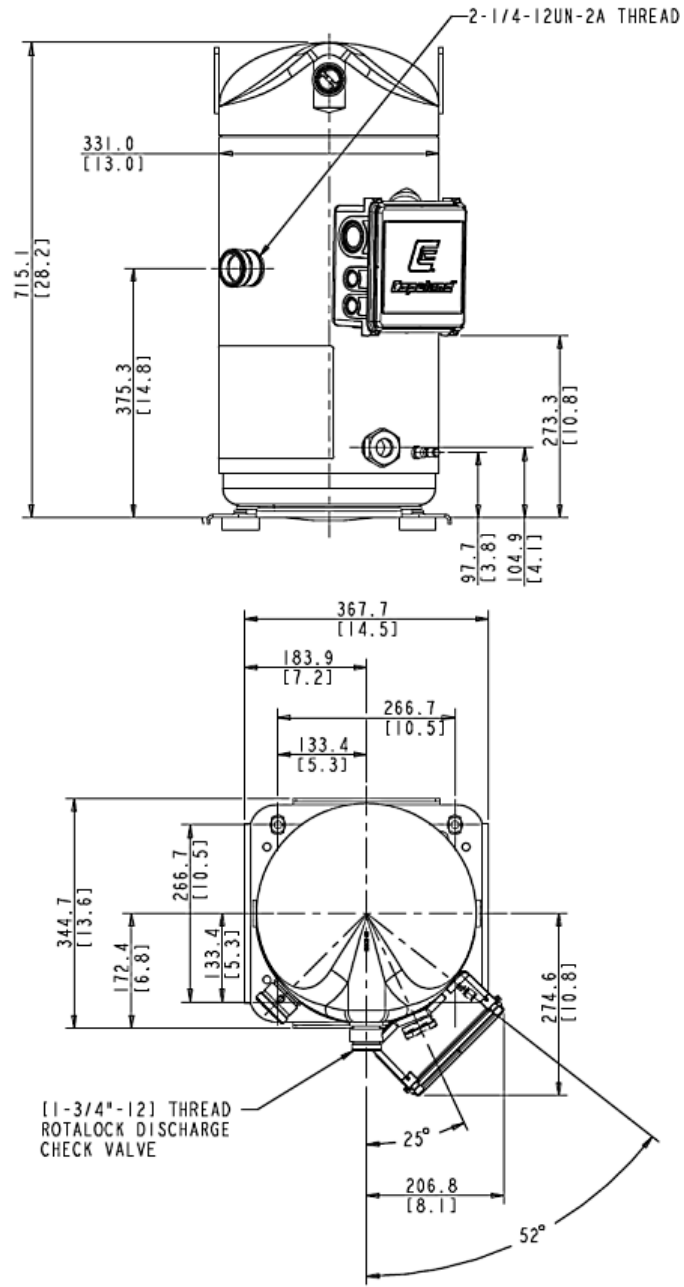
$t_c \setminus t_e$	-15	-10	-5	0	5	10	15
30	21.40	21.46	21.52	21.61	21.74	21.94	22.23
35	22.29	22.37	22.44	22.53	22.64	22.82	23.07
40	23.35	23.46	23.55	23.64	23.74	23.89	24.11
45	24.59	24.74	24.86	24.95	25.06	25.19	25.37
50	-	26.25	26.39	26.50	26.61	26.73	26.89
55	-	-	28.18	28.31	28.42	28.54	28.68
60	-	-	30.24	30.40	30.52	30.64	30.77
65	-	-	-	32.79	32.94	33.06	33.18
70	-	-	-	-	35.68	35.81	35.93

Mass flow [kg/h]

$t_c \setminus t_e$	-15	-10	-5	0	5	10	15
30	534.95	659.68	803.78	969.59	1 159.44	1 375.68	1 620.63
35	530.61	655.32	799.55	965.64	1 155.92	1 372.72	1 618.38
40	525.42	650.14	794.52	960.90	1 151.62	1 369.00	1 615.40
45	519.49	644.24	788.79	955.48	1 146.66	1 364.65	1 611.80
50	-	637.74	782.48	949.51	1 141.17	1 359.79	1 607.70
55	-	-	775.72	943.11	1 135.26	1 354.52	1 603.23
60	-	-	768.63	936.38	1 129.06	1 348.98	1 598.50
65	-	-	-	929.46	1 122.68	1 343.28	1 593.63
70	-	-	-	-	1 116.23	1 337.55	1 588.74

Model: ZR310KCE-TWD

Dimensions



Model: ZR310KCE-TWD

Image

